

Drain: JR MCKENZIE Drain #: 146
Improvement/Arm: JESSE LOVELL
Operator: J. LIVINGSTON Date: 5-26-04
Drain Classification: Urban/Rural Year Installed: N/A

GIS Drain Input Checklist

- Pull Source Documents for Scanning
- Digitize & Attribute Tile Drains
- Digitize & Attribute Storm Drains
- Digitize & Attribute SSD
- Digitize & Attribute Open Ditch
- Stamp Plans
- Sum drain lengths & Validate
- Enter Improvements into Posse
- Enter Drain Age into Posse
- Sum drain length for Watershed in Posse
- Check Database entries for errors

JL
JL
JL
JL
JL
JL
JL
JL
JL
JL
JL

Gasb 34 Footages for Historical Cost
Drain Length Log

Drain-Improvement: JR MCKENZIE - JESSE LOVELL

Drain Type:	Size:	Length	Length (DB Query)	Length Reconcile	Price:	Cost:
TILE	15"	2450'	2450'		5.00/lf	12,250.00
* TILE - BOONE CO.	12"	860'	860'		N/A	N/A
*	N/A	1320	1320'		N/A	N/A

Sum: 2450 \$12,250.00

Final Report: _____

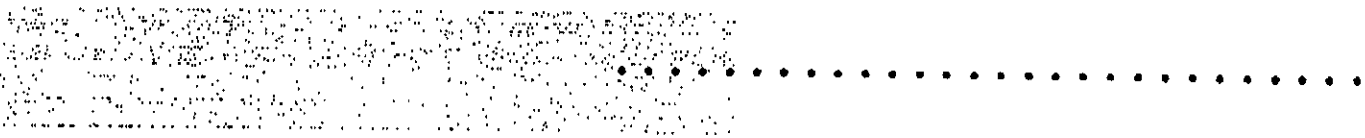
Comments:
NEW STATIONING BASED ON ESTIMATED AMOUNT OF TILE
ABANDONED IN 1981 W/REPORTING THROUGH WOODS IN
BOONE COUNTY.
TILE SIZE IN HAMILTON COUNTY BASED ON WORK ORDERS ACCORDING
TO WHICH TILE WAS REPLACED USING 14" - 16" TILE.
* BOONE COUNTY TILE NOT INCLUDED IN LENGTH OR COST.

Boone County Surveyor
116 W Washington St
Lebanon, IN 46052
765-483-4444
765-482-4430 - Fax

.....
facsimile transmittal

To: Steve Bates	Fax 317-776-9628
From: Boone County Surveyor	Date: July 8, 2003
Re: Legal of Lovell drain	Pages: 3
CC:	

Urgent For Review Please Comment Please Reply Please Recycle



NEW
NAME OF DRAIN Lovell, Jesse. (Joint) 31

Sec. 25 Twp. 20 Range 2 E. Civil Twp. Marion & Hamilton.

Length **MAIN** Line--650 Ft. Spec. 13pg 386/259/345

Also sec 24	See ? Book ?	1896	Court Record	BOOK File Box	PAGE Cause No.	DA
			Commissioners			
			Circuit		#8546	
			Superior ^{Record}		22	194

TILED PART				OPEN PARTS				GRADIENT		
Size Tile	No. Rows	Station to Station		Width of Bottom	Station to Station		Ft. Per 100 Ft.	Station to Station		
<p>Main Line</p> <p>Tiled to the Boone and Hamilton Co. line.</p> <p>Open from the above line to the terminus.</p>										

Lovell, Jesse.

Beginning at a point about ^{577.5'} 35 rods W. of the N. E. corner of the S. E. $\frac{1}{4}$ of section (25) Twp. 20, N. R. 2 E. and running thence in a general N.E. direction to a point on the Boone and Hamilton Co. line about 17 rods (280 ft.) N. of the S. E. corner of E. quarter of section (4) Twp. and range as above where the same will intersect an open ditch running into Hamilton county thence along said open ditch a distance of about 80 rods where the same will terminate. Said ditch to be an open drain from the Hamilton and Boone Co. line to the terminus.

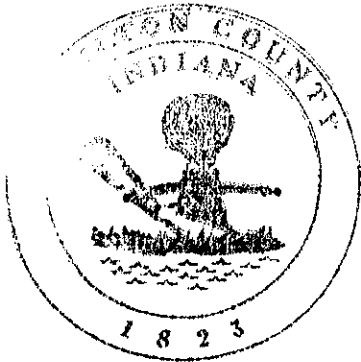
Begin - SE cor NE⁴ NE⁴ NE⁴ - thence 577.5' W.

Aerial map
#1-25

Note Type:
General Comments

THE JR MCKINZIE TOTAL LENGTH IS MADE UP OF THE FOLLOWING:

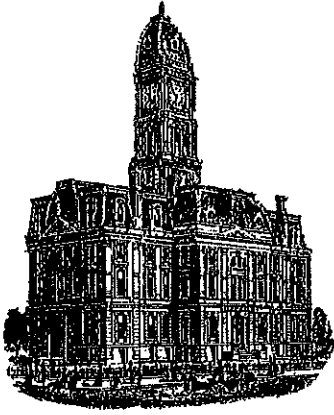
JR MCKINZIE TILE =	18365	(1892)	
JR MCKINZIE OPEN =	19300		
FM MCKINZIE =	2840	(1908)	
OA PHEBUS =	2439	(1912)	
JOHN H OSBORN =	10230	(1898) 1893	
LYDIA SWAFFORD =	1695	(1913) 1910	
JESSE LOVELL =	2450	BOONE CO. =	2650
WM STAHL =	4500	(1913)	
<hr/>			
TOTAL =	61,819		



This information was gathered for input into the Hamilton County Geographical Information System. This document is considered an official record of the GIS.

Entry Date: 11/01/01

Entered by: Suzanne L. Mills



Kenton C. Ward, CFM
Surveyor of Hamilton County
Phone (317) 776-8495
Fax (317) 776-9628

Suite 188
One Hamilton County Square
Noblesville, Indiana 46060-2230

Map Correction-Field Verification

Drain Number: 146

Drain Length: N/A

Drain Name: JR Mckinzie: Jesse Lovell Arm

Change + / -: N/A

Date: 07-19-2018

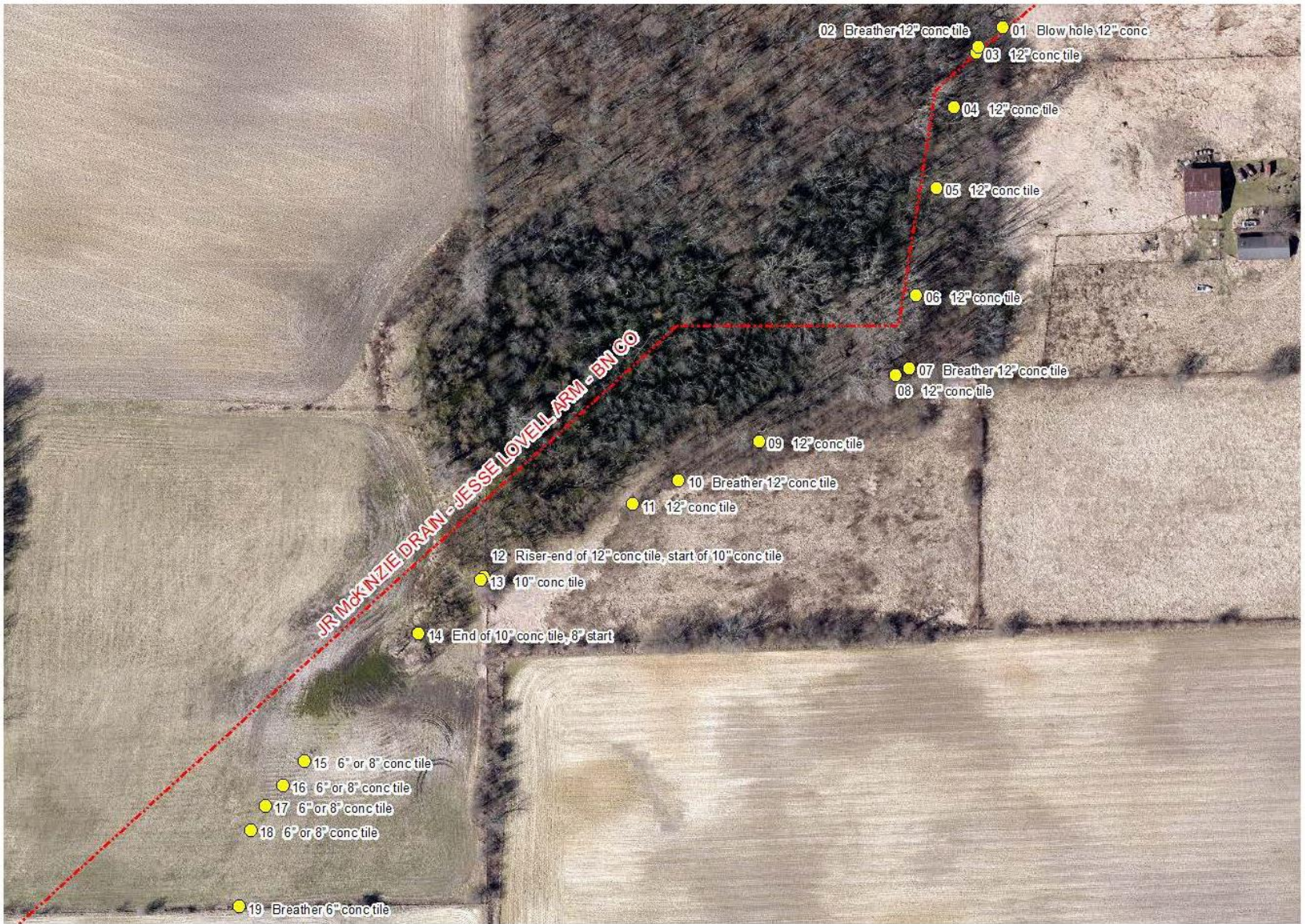
New Length: N/A

Verified By: DMW, SAB WO -2018-00199

Notes & Sketch:

Tile was field located, and two breathers were set. See attached map.

Suzanne L. Mills
GIS Specialist



This map was compiled by the Hamilton County Surveyor's Office. Although strict accuracy standards have been employed in the compilation of this map, Hamilton County does not warrant or guarantee the accuracy of the information contained herein and disclaims any and all liability resulting from any error or omission in this map.

#146 JR MCKINZIE JESSE LOVELL ARM

Printing Date: 07/19/2018
 Prepared By: Suzanne Mills, GISP
 Hamilton County Surveyor's Office
 One Hamilton County Square, Ste 188
 Noblesville, IN 46060
 317-776-8495

